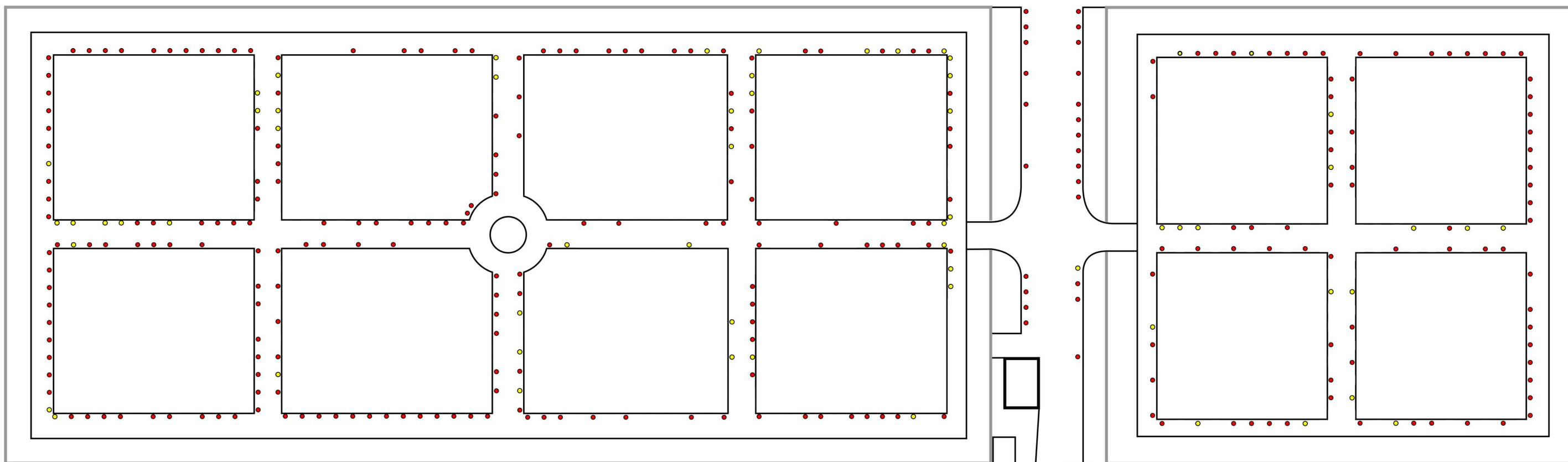

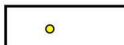


Příloha č. 4

a) Stromy a pařezy určené k odstranění:

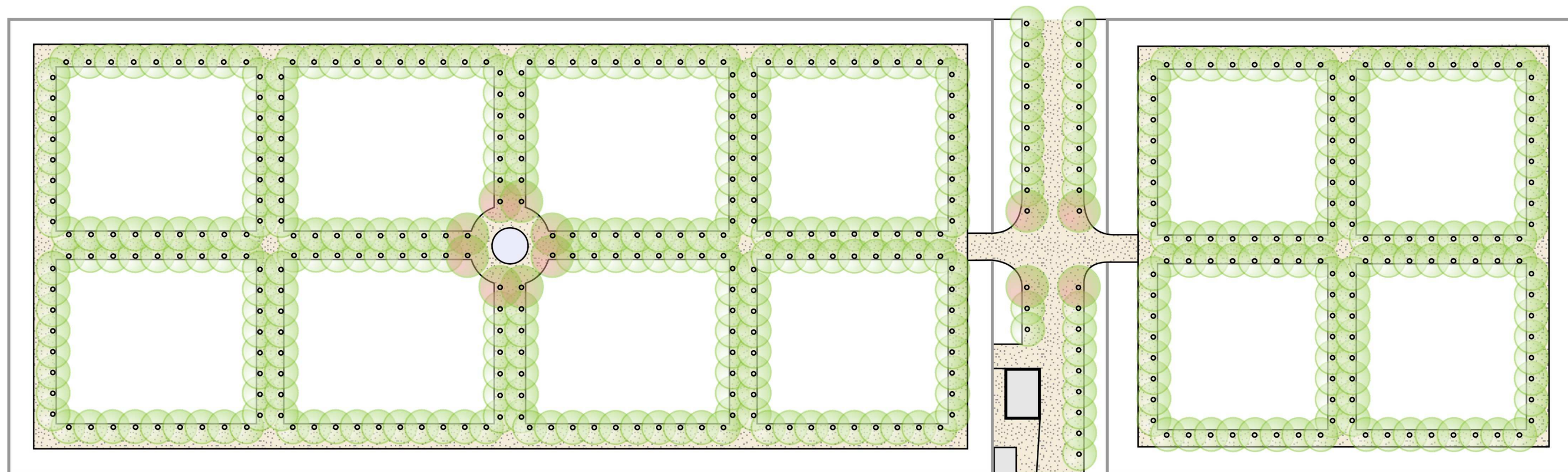


LEGENDA:

-  STÁVAJÍCÍ STROM NA VRŽENÝ NA ODSTRANĚNÍ
-  STÁVAJÍCÍ PAŘEZ NAVRŽENÝ NA ODSTRANĚNÍ



b) Nová výsadba:



LEGENDA:



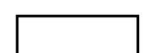
HŘBITOVNÍ ZEĎ



BUDOVY



ZPEVNĚNÉ CESTY



HROBOVÁ POLE

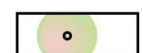


KAŠNA



NAVRHOVANÝ LISTNATÝ STROM

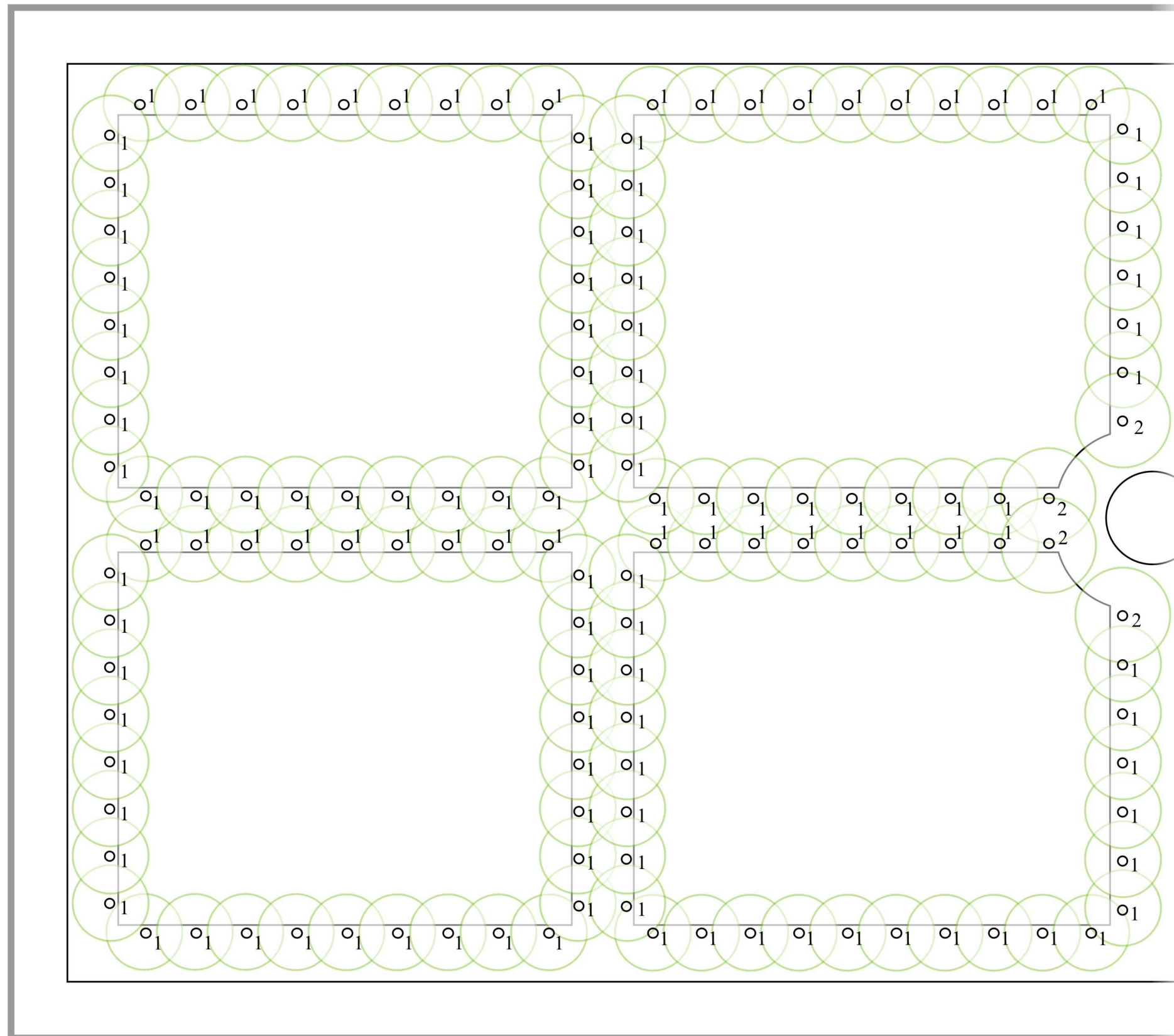
- lípa srdčitá 'Rancho' *Tilia cordata* 'Rancho'



NAVRHOVANÝ LISTNATÝ STROM

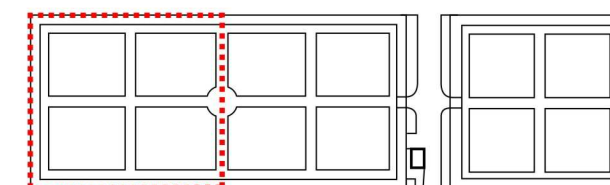
- jírovec pleťový 'Briotii' *Aesculus carnea* 'Briotii'

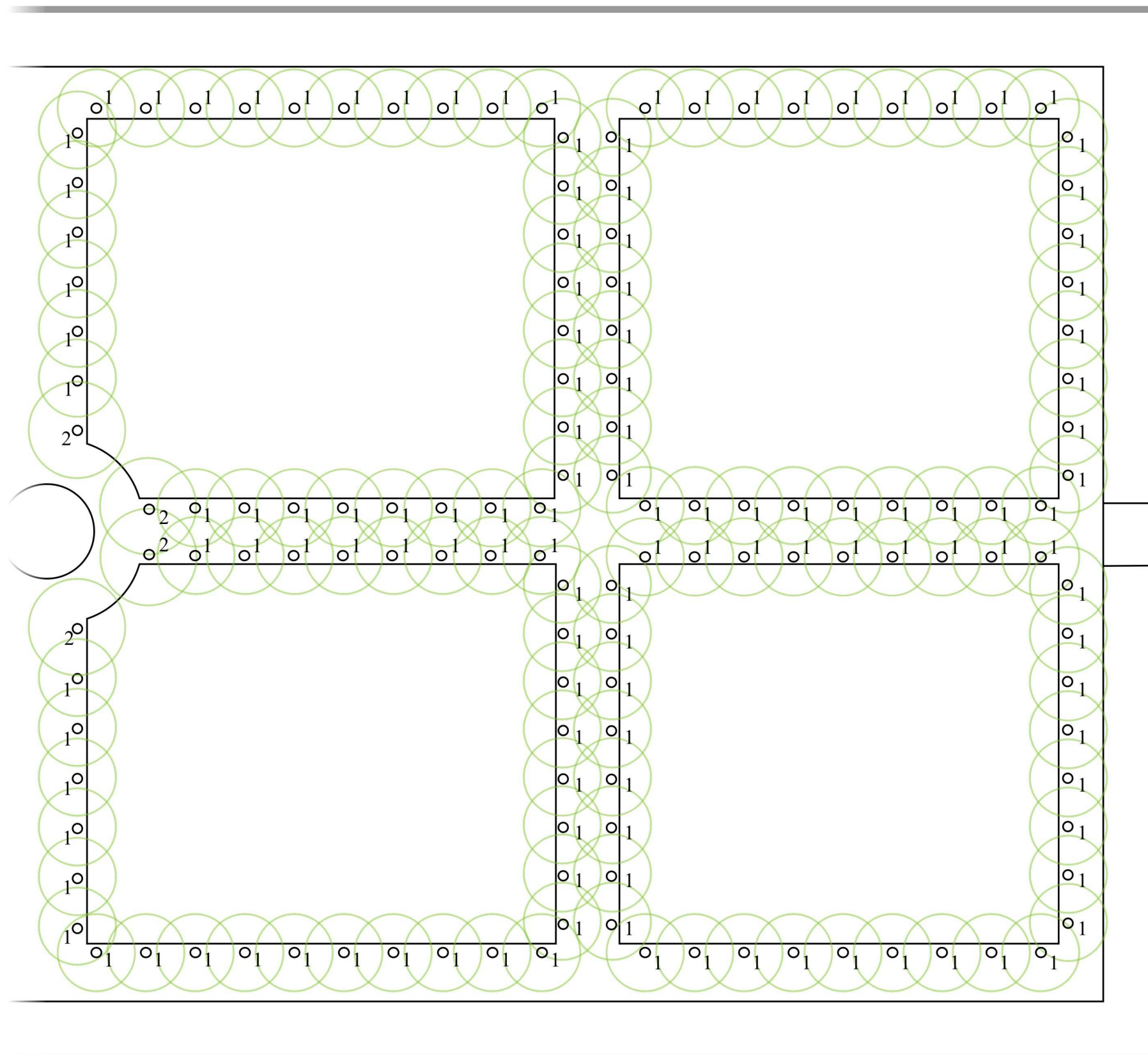




LEGENDA:

- 1 - lípa srdčitá 'Rancho' *Tilia cordata* 'Rancho'
- 2 - jírovec plet'ový 'Briotii' *Aesculus carnea* 'Briotii'

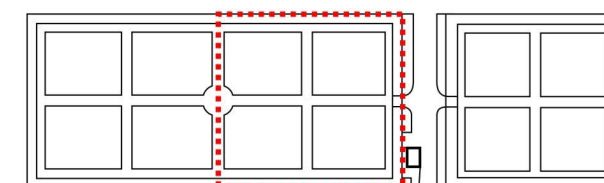


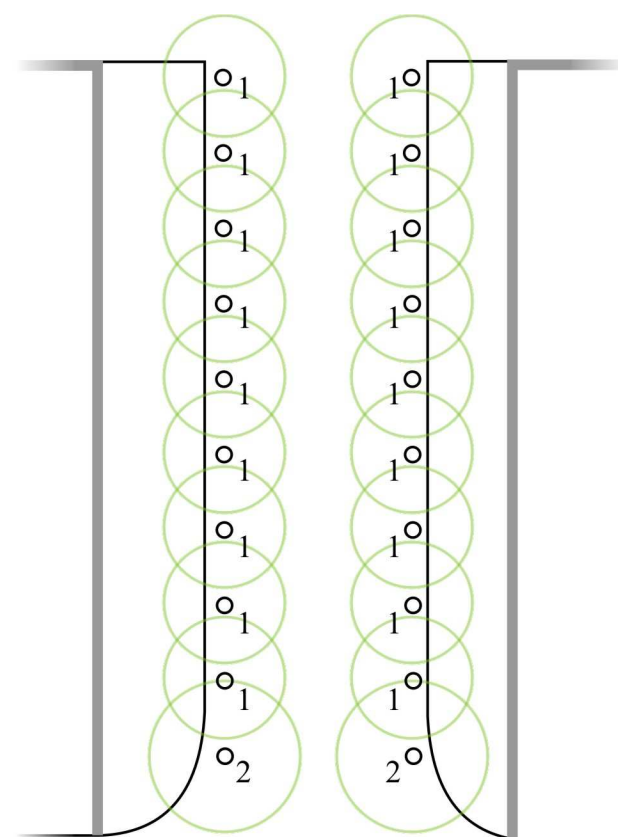


LEGENDA:

1 - lípa srdčitá 'Rancho' *Tilia cordata 'Rancho'*

2 - jírovec pleťový 'Briotii' *Aesculus carnea 'Briotii'*

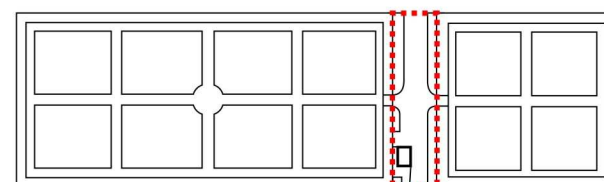
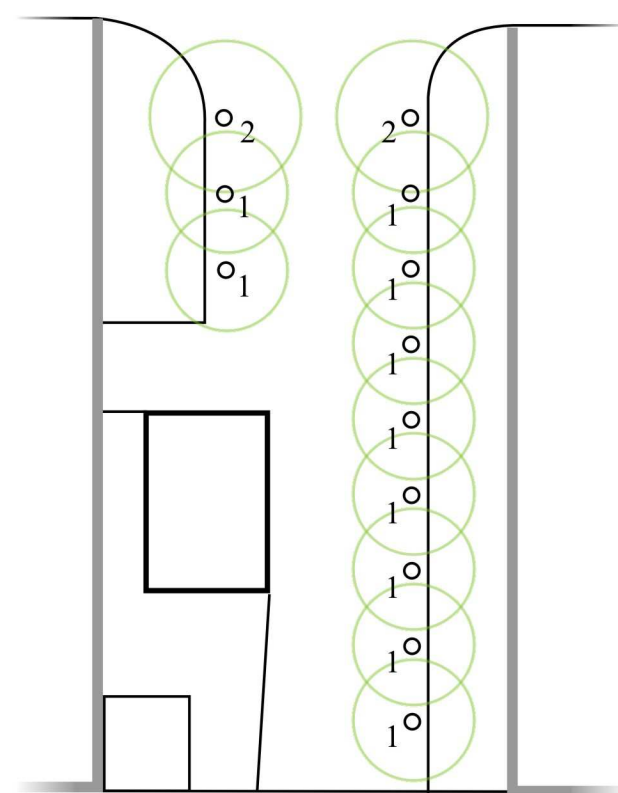


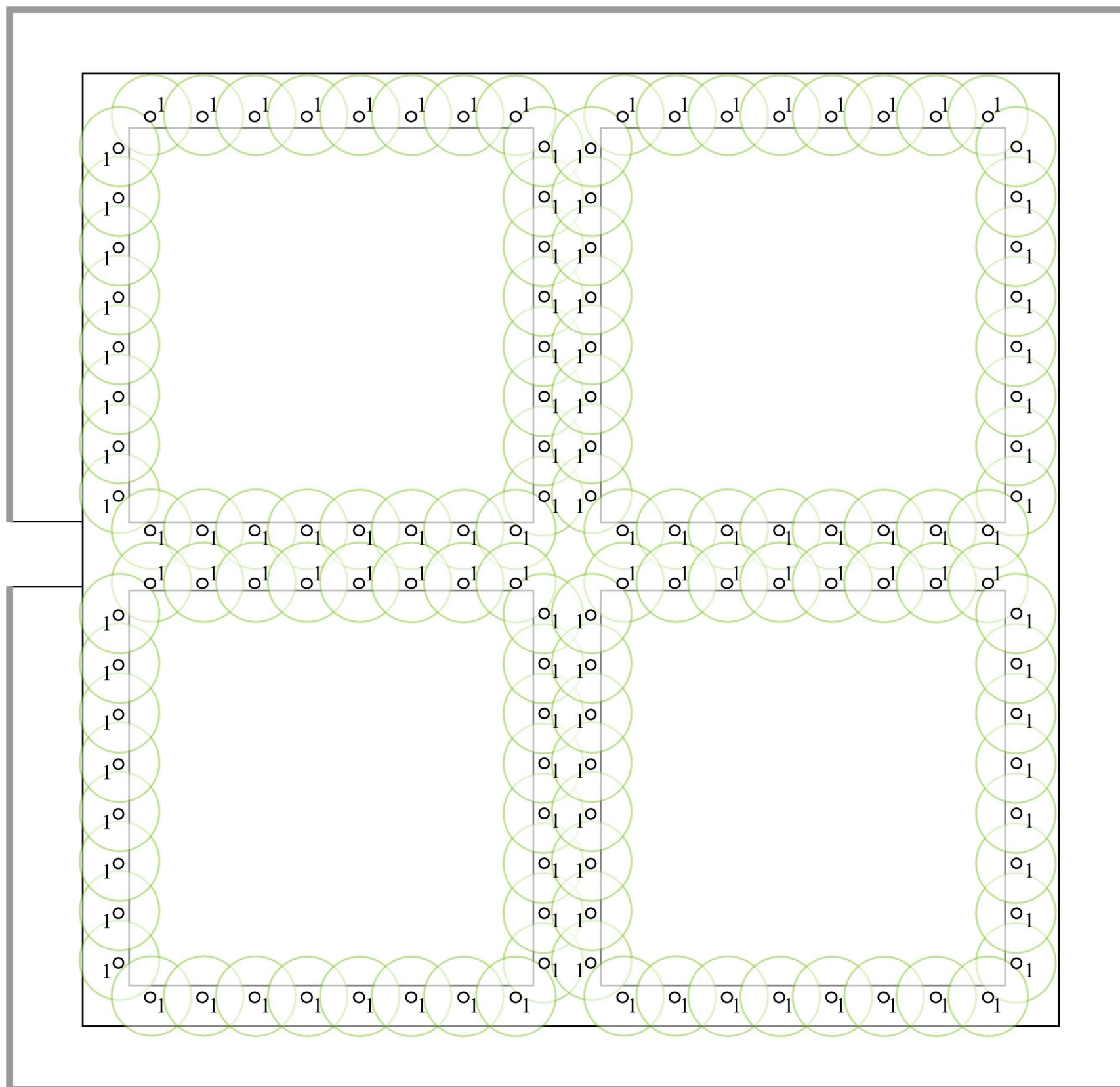


LEGENDA:

1 - lípa srdčitá 'Rancho' *Tilia cordata* 'Rancho'

2 - jírovec pleťový 'Briotii' *Aesculus carnea* 'Briotii'





LEGENDA:

1 - lípa srdčitá 'Rancho' *Tilia cordata* 'Rancho'

2 - jírovec pleťový 'Briotii' *Aesculus carnea* 'Briotii'

